

PIGTRONIX

GLOAMER

User's Guide



CONTENTS

03

Introduction

04

Explanation of Controls

06

Guided Tour

07

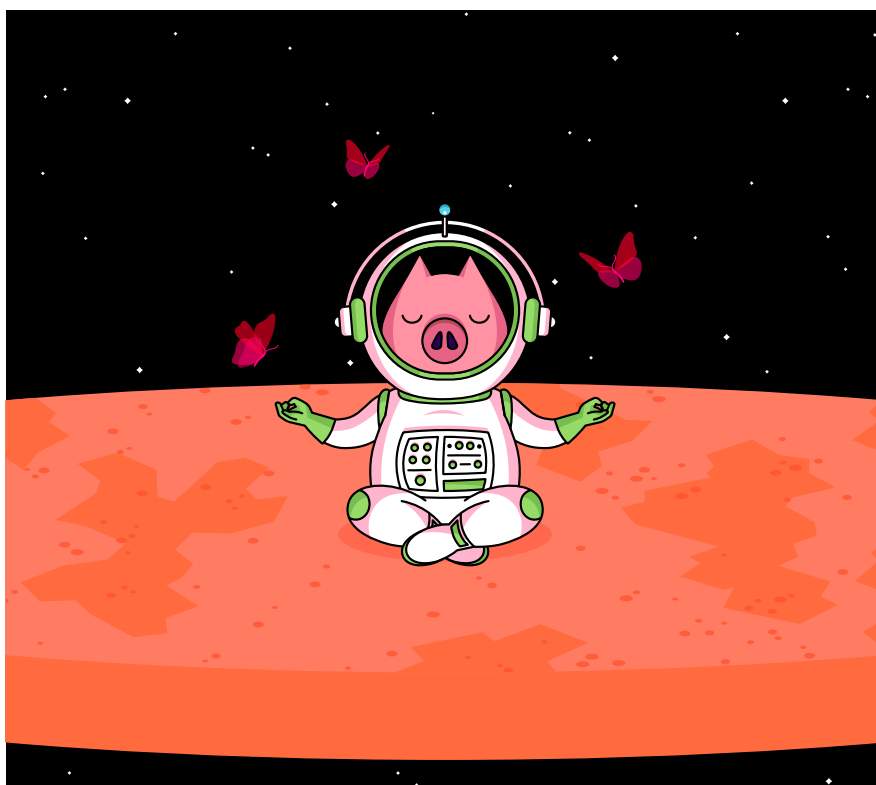
Warranty

08

Contact Information

CONJURE THE TWILIGHT.

Gloamer is an all-analog, polyphonic amplitude synthesizer that alters the attack and decay time of any sound source without sacrificing the fidelity of the original tone. Its attack function provides a pick-triggered volume swell: a cinematic “slow gear” effect that is smooth and controllable with variable timing from extremely fast to very slow. The volume swell cycle can be reset at any moment by muting, allowing players to craft bowed string-like lines and chords with ease. Gloamer also features a powerful optical compressor that can add subtle punch or extreme sustain, helping to maintain a smooth volume swell effect even with very long attack times. A Volume knob controls loudness at the peak of the attack cycle, while a master Blend control allows players to layer an uncompressed clean sound in with the volume swell effect. Additionally, when activated, the Decay function causes notes to fade out once the attack cycle is complete. When the decay cycle is completed, an auto-reset function causes the attack to begin again immediately, as long as there is audio input. This allows you to create a wide range of undulating, asymmetrical tremolos at slower settings as well as pulsating stutter effects when using faster attack and decay times.



EXPLANATION OF CONTROLS



Footswitches

- 1 Engage:** This footswitch turns on the compression and attack functions. When the attack feature is in use, notes will have a slow attack, becoming louder based on the timing set by the attack dial.
- 2 Decay:** This footswitch turns the decay function on and off. When the decay feature is in use, notes will become quieter at a rate set by the decay dial.

Knobs

- 3 Volume:** Sets the master output volume of the effect when engaged.
- 4 Compression:** Determines the balance of clean and compressed signal. When turned fully counter-clockwise, you will hear only the pure input signal. When turned fully clockwise you will hear only the effect signal. note: The attack and decay functions will modulate the un-compressed, clean signal if the Compression knob is set counter-clockwise.

- 5 **Blend:** Determines the balance of clean and effect. When turned fully counter-clockwise, you will hear only the pure input signal. When turned fully clockwise you will hear only the effect signal.
- 6 **Attack:** Determines the duration of time it takes for a note to attack in from silent to full volume.
- 7 **Decay:** Determines the duration of time it takes for a note to fade out from full volume to silence. An auto-reset feature allows for a wide range of variable tremolo effects. If there is any input signal present at the end of the decay cycle, auto-reset causes the modulation cycle to begin again.
- 8 **Sensitivity:** Determines how much input signal is needed to reset the attack and decay cycle. Use this knob to set the cutoff point below which the pedal needs additional signal to re-trigger the cycle.
- 9 **Ready (LED):** Signals when the pedal is armed and ready to begin the attack and/or decay cycle. When a note is played, the Ready light will turn off and the attack and decay cycle will begin.

Rocker Switches

- 10 **DC Power 9-Volts:** Gloamer requires an isolated, standard 9VDC 2.1mm neg. Tip power supply. Current draw is 100mA.
- 11 **In:** Plug in your instrument here.
- 12 **Sidechain:** This is an audio input for the envelope detector within the Gloamer. The sidechain feature allows you to connect an external source to control the timing of the attack and decay cycle.
- 13 **Out:** Plug in your amp, mixer, DI box, etc. here.

Gloamer requires a negative tip, 9VDC power supply.
Gloamer does not take batteries.

GUIDED TOUR

The following steps guide you through the sonic palette of Gloamer and show you how to get at the range of tones that it has to offer.

1. Set all of the controls fully counter-clockwise and set the toggles to the right. The Ready light should be lit, but the other LEDs should be off. The Gloamer is in bypass mode. Play your instrument and make sure a clean sound is passing through the pedal.
2. Turn the Volume and Sensitivity controls up to 3:00. Click the Engage footswitch to turn the Gloamer on. Play your instrument.
3. Turn the Blend knob up full clockwise.
4. Turn up the Compression control to hear the compressor/sustain effect.
5. Set the Attack dial to 12:00. Play a chord and notice how it swells in from silence up to full volume.

Note: Once the attack cycle has been triggered, the musician must mute their instrument in order to reset the attack cycle. When the instrument is muted, the Ready light comes on, letting the musician know that the attack function is armed. The touch sensitive nature of the attack function lets the player control the threshold between the volume attack effect and a pure compression sound with playing dynamics and muting technique.

Note: Lower Sensitivity settings will require less muting, however the attack function can reset prematurely if the Sensitivity is set too low.

6. Turn the Blend knob down to 12:00 and listen to the volume swell in parallel with the clean sound.
7. Turn the Blend knob back up to full clockwise.
8. Turn on the Decay footswitch and set the Attack and Decay dials to 9:00. Play a chord and notice how the audio swells in and then fades out based on the knob settings. Try different combinations of Attack and Decay settings in conjunction with various settings of the Blend knob.

PIGTRONIX LIMITED WARRANTY

Your new Pigtronix product is warranted to be free from defects in materials and workmanship for 1 year from the original date of purchase. Warranty applies only to the original retail purchaser of a registered Pigtronix product, subject to the limitations contained in this warranty.

THIS WARRANTY IS EXTENDED TO THE ORIGINAL RETAIL PURCHASER OF PIGTRONIX PRODUCTS BOUGHT ON OR AFTER JANUARY 1, 2020 ONLY AND MAY NOT BE TRANSFERRED OR ASSIGNED TO SUBSEQUENT OWNERS. IN ORDER TO VALIDATE YOUR WARRANTY, AND AS A CONDITION PRECEDENT TO WARRANTY COVERAGE HEREUNDER, YOU MUST REGISTER YOUR PRODUCT WITHIN THIRTY (30) DAYS FOLLOWING THE ORIGINAL DATE OF PURCHASE. YOUR PROOF OF PURCHASE OR SALES RECEIPT MUST ACCOMPANY ALL REQUESTS FOR WARRANTY COVERAGE— YOU MAY SUBMIT YOUR RECEIPT ON THE REGISTRATION FORM. IF YOU DO NOT REGISTER THE PRODUCT WITHIN 30 DAYS OF PURCHASE, YOUR PRODUCT WILL NOT BE SERVICED UNDER WARRANTY.

If your product is destroyed, lost or damaged beyond repair while in the possession of Pigtronix for repair, Pigtronix will replace that product with one of the same or most similar style of a value not in excess of the original purchase price of your pedal. Any insurance covering the pedal, including but not limited to collector's value insurance, must be carried by you at your expense.

This warranty covers the cost of both labor and materials on repairs deemed necessary by our Customer Service Representative.

THIS WARRANTY DOES NOT COVER:

- Any product that has been altered or modified in any way or upon which the serial number has been tampered with or altered.
- Any product whose warranty has been altered or upon which false information has been given.
- Any product that has been damaged due to misuse, negligence, accident, or improper operation.
- The subjective issue of tonal characteristics.
- Shipping damages of any kind.
- Any product that has been subjected to extremes of humidity or temperature
- Normal wear and tear
- Any product that has been purchased from an unauthorized dealer, or upon which unauthorized repair or service has been performed.

PIGTRONIX MAKES NO OTHER EXPRESS WARRANTY OF ANY KIND WHATSOEVER. ALL IMPLIED, WARRANTIES, INCLUDING WARRANTIES OF MERCHANTABILITY AND FITNESS FOR A PARTICULAR PURPOSE, EXCEEDING THE SPECIFIC PROVISIONS OF THIS WARRANTY ARE HEREBY DISCLAIMED AND EXCLUDED FROM THIS WARRANTY. SOME STATES AND/OR COUNTRIES DO NOT ALLOW THE EXCLUSION OR LIMITATION OF IMPLIED WARRANTIES SO THAT THE ABOVE MAY NOT APPLY TO YOU. PIGTRONIX SHALL NOT BE LIABLE FOR ANY SPECIAL, INDIRECT CONSEQUENTIAL, INCIDENTAL OR OTHER SIMILAR DAMAGES SUFFERED BY THE PURCHASER OR ANY THIRD PARTY, INCLUDING, WITHOUT LIMITATION. DAMAGES FOR LOSS OF PROFITS OR BUSINESS OR DAMAGES RESULTING FROM USE OR PERFORMANCE OF THE PRODUCT, WHETHER IN CONTRACT OR IN TORT, EVEN IF PIGTRONIX OR ITS AUTHORIZED REPRESENTATIVE HAS BEEN ADVISED OF THE POSSIBILITY OF SUCH DAMAGES, AND PIGTRONIX SHALL NOT BE LIABLE FOR ANY EXPENSES, CLAIMS, OR SUITS ARISING OUT OF OR RELATING TO ANY OF THE FOREGOING.

Steps To File for Warranty Coverage:

1. Register your new guitar at **<http://pigtronix.com/warranty>**
2. Complete the warranty request form available at **<http://pigtronix.com/support>** and we will handle it from there!

CONTACT INFORMATION

Address

Bond Audio LLC
141 W 28th St, Floor 4
New York, NY, 10001

Warranty Service Email

support@pigtronix.com

Warranty Contact Form

pigtronix.com/warranty

Phone

631-331-7447

Website

pigtronix.com

Email

info@pigtronix.com

YouTube

youtube.com/pigtronix



**Product manuals are offered digitally in an attempt to be mindful of our environment.
We ask that you consider the same before printing at home. Thank you!**

All contents © Bond Audio LLC 2022